

UB20xx

8"/20 cm

Blower/Exhauster

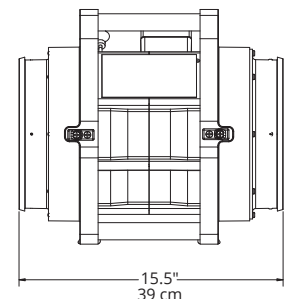
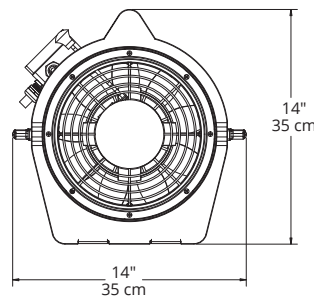
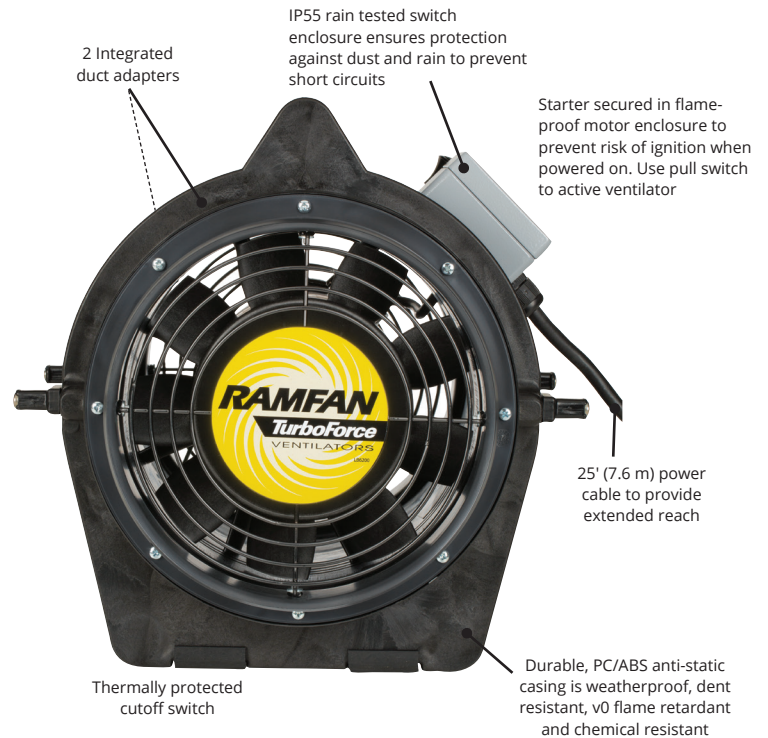
Explosion-proof blower/exhauster manufactured to meet the requirements of the ATEX Directive, IEC standards and INMETRO standards. Safely blow or exhaust hazardous gases with minimal risk of the fan causing a spark.

Safety is compromised if any component along the the electrical path in the blower/exhauster poses a risk of igniting a spark. Therefore, the UB20xx is built using only certified explosion-proof components along the electrical path. Furthermore, once assembled the whole unit is certified for safe use in explosive atmospheres in accordance with the limitations of the rating. It is the user's responsibility to determine the suitability of equipment for the intended purpose.

In addition to providing peace of mind to the user, whole-unit certified fan prevents suppliers from being linked to the chain of liability. That is why it is crucial for users and suppliers to demand

Specifications

| Model | UB20xx (115V) | UB20xx (230V) |
|-----------------------|---|---------------------------|
| Part # | EF7002 (115V) | EF8002 (230V) |
| IMPA Code | 591416 | 591417 |
| Motor | 1/3 Hp | 0.19 kW |
| Motor Type | Totally Encapsulated Air Over Flame Proof | |
| Electric | 115V, 50/60Hz, 1ø | 230V, 50/60Hz, 1ø |
| Amps (Start/Run) | 7A / 2A | 7A / 1.2A |
| Cable Lengths | 25'/16 AWG | 7.6 m/1.5 mm ² |
| Plug Types | A.T.X. 100/130V | A.T.X. 240V |
| Operating Temperature | -22°F to +104°F | -30°C to +40°C |
| Noise | 74 dB @ 3' (1m) | |
| Run Time | Continuous | |
| Weight | 27 lbs | 12 kg |
| Dimensions (h/w/d) | 14 x 14 x 15.5 in | 35 x 35 x 39 cm |
| Impeller | 9-Blade | |
| Duct Adapters | 2 | |



WHOLE-UNIT CERTIFICATION



Certifications & Approvals

Ex II 2 G Ex de IIB T6 Gb
IECEX UL Certificate #: 13.0062X
INMETRO Certificate #: UL-BR 13.0593X



Performance

| Airflow | UB20xx (60Hz) | UB20xx (50Hz) |
|-----------------------------|------------------------------------|------------------------------------|
| Free Air | 980 cfm (1,666 m ³ /hr) | 819 cfm (1,392 m ³ /hr) |
| Through Duct | | |
| 15'/4.6 m w/ one 90° turn: | 789 cfm (1,341 m ³ /hr) | 659 cfm (1,120 m ³ /hr) |
| 15'/4.6 m w/ two 90° turns: | 666 cfm (1,132 m ³ /hr) | 558 cfm (948 m ³ /hr) |
| 25'/7.6 m w/ one 90° turn: | 722 cfm (1,227 m ³ /hr) | 603 cfm (1,025 m ³ /hr) |
| 25'/7.6 m w/ two 90° turns: | 614 cfm (1,044 m ³ /hr) | 510 cfm (867 m ³ /hr) |

Kits

UB20xx w/ Quick-Couple™ Canister

Order# EF7015 - 60Hz UB20xx w/Canister & 15' (4.6 m) duct
Order# EF7025 - 60Hz UB20xx w/Canister & 25' (7.6 m) duct
Order# EF8015 - 50Hz UB20xx w/Canister & 15' (4.6 m) duct
Order# EF8025 - 50Hz UB20xx w/Canister & 25' (7.6 m) duct

UB20xx M.E.D.™ (Manhole Entry Device)

Order# EF7015-MEDXX (UB20XX 60 Hz)
Order# EF8015-MEDXX (UB20XX 50 Hz)

Anti-static system ventilates without blocking the entry to maintain airflow while working and permits rapid entry and exit.

Package includes: UB20xx fan, Quick-couple™ canister with conductive duct, M.E.D.™, 90° elbow, and universal mount.



Available Accessories

ECKO Flex™ Anti-Static Duct with carrying bag

Order# FDT-0815CBB
8" (20cm) anti-static duct 15' (4.6 m), w/ carrying bag
Order# FDT-0825CBB
8" (20cm) anti-static duct 25' (7.6 m), w/ carrying bag



Quick-Couple™ Canister

Order# EF7004CS
Quick-Couple™ Canister w/ 8" (20cm) conductive duct 15" (4.6 m)

Order# EF7004CL
Quick-Couple™ Canister w/ 8" (20cm) conductive duct 25' (7.6 m)

